



GORLITZ SEWER
& DRAIN **INC.**

GO 4000 • GO 3500 • GO 3000 • GO 1500A • GO 1500

OPERATING & MAINTENANCE INSTRUCTIONS

HIGH PRESSURE
WATER JETTERS



Thank you very much for choosing an Gorlitz product!

For future reference, please complete the owner's record below:

Serial Number/Lot Date Code:

Purchase Date:

Save the receipt, warranty, and this manual. It is important that you read the entire manual to become familiar with this product before you begin using it.

This drain cleaner is designed for certain applications only. Gorlitz Sewer & Drain Inc. is not responsible for issues arising from modification or improper use of this product such as an application for which it was not designed. We strongly recommend that this product not be modified and/or used for any application other than that for which it was designed.

For technical questions, please contact via emailing to sales@gorlitz.com.



WARNING



DO NOT ATTEMPT TO OPERATE ANY HIGH PRESSURE WATER JETTER UNTIL YOU HAVE THOROUGHLY READ AND UNDERSTAND ALL INSTRUCTIONS, RULES AND REGULATION CONTAINED IN THIS MANUAL. FAILURE TO COMPLY CAN RESULT IN ACCIDENT INVOLVING FIRE, ELECTRIC SHOCK AND/OR SERIOUS PERSONAL INJURY. RETAIN OWNERS MANUAL AND REVIEW FREQUENTLY.

SAVE ALL WARNINGS AND INSTRUCTIONS FOR FUTURE REFERENCE



ELECTRIC SHOCK RESULTING IN DEATH CAN OCCUR IF YOU PLUG THIS MACHINE INTO AN IMPROPERLY WIRED OUTLET. IF THE GROUND WIRE IS ELECTRIFIED, YOU CAN BE ELECTROCUTED BY JUST TOUCHING THE MACHINE, EVEN WHEN THE POWER SWITCH IS OFF. A GROUND FAULT CIRCUIT INTERRUPTER WILL NOT PROTECT YOU IN THIS SITUATION. USE A UL LISTED TESTER TO DETERMINE IF THE OUTLET IS SAFE.



DO NOT OPERATE POWER TOOLS IN EXPLOSIVE ATMOSPHERES, SUCH AS IN THE PRESENCE OF FLAMMABLE LIQUIDS, GASES, OR DUST. POWER TOOLS CREATE SPARKS WHICH MAY IGNITE THE DUST OR FUMES.



ONLY WEAR LEATHER GLOVES. NEVER USE ANY OTHER TYPE OF GLOVE SUCH AS CLOTH, RUBBER, OR COATED GLOVES. NEVER GRASP A ROTATING CABLE WITH A RAG. THESE ITEMS COULD BECOME WRAPPED AROUND THE CABLE AND CAUSE SERIOUS INJURY.



ALWAYS WEAR SAFETY GLASSES AND RUBBER SOLED, NON-SLIP SHOES. USE OF THIS SAFETY EQUIPMENT MAY PREVENT SERIOUS INJURY.



DO NOT OVERSTRESS CABLES. OVERSTRESSING CABLES MAY CAUSE TWISTING, KINKING, OR BREAKING OF THE CABLE AND MAY RESULT IN SERIOUS INJURY.














This product can expose you to chemicals including lead, which is known to the State of California to cause cancer and birth defects or other reproductive harm. For more information go to www.P65Warnings.ca.gov.

GENERAL SAFETY INSTRUCTIONS

READ ALL SAFETY WARNINGS AND ALL INSTRUCTIONS. FAILURE TO FOLLOW ALL INSTRUCTIONS LISTED BELOW MAY RESULT IN ELECTRIC SHOCK, FIRE, AND/OR SERIOUS INJURY.



THIS IS THE SAFETY ALERT SYMBOL. IT IS USED TO ALERT YOU TO POTENTIAL PERSONAL INJURY HAZARDS. OBEY ALL SAFETY MESSAGES THAT FOLLOW THIS SYMBOL TO AVOID POSSIBLE INJURY OR DEATH.

-  **KNOW YOUR EQUIPMENT:** READ OWNERS MANUAL CAREFULLY. LEARN ITS APPLICATIONS AND LIMITATIONS. PAY ATTENTION TO SAFETY LABELS ATTACHED TO MACHINE.
-  **AVOID DANGEROUS ENVIRONMENT:** DO NOT EXPOSE OR OPERATE MACHINE IN RAIN, DAMP OR WET LOCATIONS. DO NOT OPERATE IN PRESENCE OF FLAMMABLE GASES OR LIQUIDS.
-  **WEAR PROPER APPAREL:** FOR ADDED PROTECTION, WHEN OPERATING MACHINE, USE RUBBER GLOVES AND RUBBER BOOTS WITH NON-SKID SOLES. WEAR SAFETY GLASSES OR FACE SHIELD.
-  **KEEP UNAUTHORIZED PERSONS AWAY:** ALL SPECTATORS, ESPECIALLY CHILDREN, SHOULD BE KEPT AT A SAFE DISTANCE.
-  **SHUTOFF MACHINE:** ALWAYS TURN MACHINE OFF DURING NOZZLE, HOSE OR REEL CHANGE.
-  **PRESSURE RATINGS:** DO NOT EXCEED THE PRESSURE RATING (PSI) SPECIFIED FOR A PARTICULAR PUMP, HOSE OR REEL.
-  **DANGER! HIGH PRESSURE!:** NEVER HOLD OR GRAB JET NOZZLE DURING OPERATION. NEVER POINT WATER SPRAY AT ANYONE.
-  **STAY ALERT:** WATCH WHAT YOU ARE DOING AND USE COMMON SENSE. DO NOT OPERATE MACHINE WHILE UNDER THE INFLUENCE OF DRUGS, ALCOHOL OR MEDICATION.
-  **SHUT DOWN:** ALWAYS TURN MOTOR OFF FIRST BEFORE DISCONNECTING WATER SUPPLY.
-  **MAINTAIN MACHINE WITH PROPER CARE:** KEEP HIGH PRESSURE WATER JETTERS CLEAN FOR MAXIMUM SAFETY AND PERFORMANCE. FOLLOW INSTRUCTIONS FOR LUBRICATION, CHANGING ACCESSORIES AND MAINTENANCE.
-  **MANUFACTURERS SAFETY AND OPERATING MANUALS:** READ AND UNDERSTAND OWNER'S MANUALS SUPPLIED BY MANUFACTURERS BEFORE OPERATING ANY JETTER.

ADDITIONAL SAFETY INSTRUCTIONS FOR ELECTRIC POWERED MODELS

- MOTORS ARE WIRED TO OPERATE ON 110 VOLT, 60 HZ SINGLE PHASE CURRENT UNLESS STATED OTHERWISE.
- GROUND ALL ELECTRIC WATER JETTERS PROPERLY. ALL MACHINES ARE EQUIPPED WITH A THREE (3) PRONG PLUG, IT SHOULD BE PLUGGED INTO A THREE (3) HOLE ELECTRICAL RECEPTACLE.
- USE MINIMUM 12 GAUGE WIRE THREE (3) PRONG TYPE HEAVY DUTY EXTENSION CORD IN GOOD CONDITION. NEVER PULL ON EXTENSION CORD TO DISCONNECT FROM RECEPTACLE.
- THE 25 FOOT LONG POWER SUPPLY CORD IS PROVIDED WITH A BUILT IN GROUND FAULT CIRCUIT INTERRUPTER (GFCI). FOR MAXIMUM PROTECTION AGAINST ELECTRICAL SHOCK HAZARD, TEST YOUR GFCI REGULARLY.
- AVOID SPRAYING, DOUSING THE MOTOR OR ELECTRIC CONTROLS WITH WATER.

ADDITIONAL SAFETY INSTRUCTIONS FOR GASOLINE POWERED MODELS

- WARNING! GASOLINE IS EXTREMELY FLAMMABLE AND EXPLOSIVE UNDER CERTAIN CONDITIONS.
- DO NOT ALLOW FLAMES OR SPARKS IN THE AREA.
- NEVER REFUEL HOT ENGINE. ANY SPILLED GASOLINE OR FUEL VAPOR MAY IGNITE.
- REFUEL IN WELL VENTILATED AREA WITH ENGINE STOPPED.
- NEVER OVERFILL THE FUEL TANK, AFTER REFUELING REPLACE GAS CAP SECURELY. IF ANY FUEL IS SPILLED, USE CLEAN CLOTH TO WIPE UP SPILLED FUEL.
- DO NOT RUN THE ENGINE IN A CONFINED OR ENCLOSED AREA. EXHAUST FUMES CONTAIN POISONOUS CARBON MONOXIDE GASES WHICH MAY LEAD TO UNCONSCIOUSNESS OR EVEN DEATH.
- BE CAREFUL NOT TO TOUCH THE ENGINE DURING OPERATION. THE MUFFLER AND CYLINDER AREA MAY BECOME EXTREMELY HOT.
- DO NOT LAY MACHINE ON ITS SIDE OR TILT BACKWARDS, AS FUEL MAY LEAK THROUGH THE CAP VENT HOLE.
- DO NOT STORE MACHINE NEAR OPEN FLAMES, SPARKS OR IN DUSTY AREA.



BATTERIES SUPPLIED WITH ELECTRIC MODELS CONTAINS SULFURIC ACID. AVOID CONTACT OF SULFURIC ACID WITH SKIN, EYES OR CLOTHING. ALWAYS WEAR GLOVES AND SAFETY GLASSES WHEN HANDLING YOUR BATTERY. PAY SPECIAL ATTENTION TO MANUFACTURERS BATTERY CHANGING INSTRUCTIONS.

UNCRATING AND CHECKING CONTENTS

GORLITZ JETTERS ARE SHIPPED ASSEMBLED. IN ORDER TO FACILITATE PACKAGING, CERTAIN ITEMS ARE NOT ATTACHED TO EQUIPMENT AND MUST BE ASSEMBLED BY PURCHASER. DUE TO SHIPMENT AND HOW THEY ARE HANDLED BY VARIOUS FREIGHT COMPANIES, INSPECTION OF ALL ITEMS AND CHECKING FOR LOOSE BOLT CONNECTIONS OR DAMAGED PARTS IS RECOMMENDED.



WHEN UNLOADING MACHINE FROM SHIPPING CARTON, DO NOT ALLOW MACHINE TO DROP OR FALL. THE SUDDEN IMPACT MAY MISALIGN THE MOTOR TO PUMP CONNECTION AND/OR HOSE REEL STOP/BRAKE ASSEMBLY.

BATTERY

JETTERS EQUIPPED WITH ELECTRIC STARTERS REQUIRE A 12 VOLT BATTERY. THE BATTERY IS SUPPLIED BY THE CUSTOMER UNLESS SPECIFIED OTHERWISE. RECOMMENDED BATTERY SIZE: SEARS MODEL NO. 22844359 OR EQUIVALENT. FOLLOW MANUFACTURES INSTALLATION AND CHARGING INSTRUCTIONS.



POISON! BATTERY CONTAINS SULFURIC ACID. AVOID CONTACT WITH SKIN, EYES OR CLOTHING.

LUBRICATION

GORLITZ JETTERS SHOULD BE GIVEN THE BEST OF CARE. IF KEPT CLEAN AND LUBRICATED, THEY CAN PROVIDE MANY YEARS OF TROUBLE-FREE SERVICE. THE FOLLOWING INSTRUCTIONS SHOULD BE CAREFULLY OBSERVED AT ALL TIMES:

- OIL OR GREASE ALL POINTS WHERE FRICTION EXIST BETWEEN TWO OR MORE MOVING PARTS.
- GREASE ALL WHEEL AND REELS EQUIPPED WITH ZERK FITTINGS.
- PERIODICALLY CHECK OIL LEVEL AT PUMP AND MOTOR.
- OIL RECOMMENDATIONS ARE: SAE 30W NON-DETERGENT OR 15W-50 SYNTHETIC MOTOR OIL FOR ELECTRIC MODELS.
- FOR GASOLINE ENGINES: MOBIL 15W-30 FULL SYNTHETIC MOTOR OIL.
- FOR GASOLINE PUMPS AND GEARBOXES: SAE 80W-90 GEAR OIL



FOR ADDITIONAL LUBRICATION OR MAINTENANCE INSTRUCTIONS CONSULT YOUR PUMP AND MOTOR MANUFACTURERS OWNER'S MANUAL.

MODEL COMPARISON CHART

MODEL	MOTOR	PUMP	PRESSURE	HOSE	PIPE DIA.	APPLICATION
GO 1500A ELECTRIC JETTER	2 HP	2.1 GPM	1500 PSI	1/8" X 50'	1 1/2" TO 2"	TUBS SINKS SHOWERS
GO 1500 ELECTRIC JETTER	2 HP	2.1 GPM	1500 PSI	1/8" X 50' 1/4 X 100'	1 1/2" TO 3"	TUBS SINKS SHOWERS
GO 3000 ELECTRIC JETTER	389 cc	4.5 GPM	3000 PSI	1/8" X 75' 3/8 X 200'	1 1/2" TO 6"	TUBS, SINKS SHOWERS DRAINS
GO 3500 ELECTRIC JETTER	688 cc	5.5 GPM	3500 PSI	1/8" X 75' 3/8 X 300"	1 1/2" TO 8"	TUBS, SINKS SHOWERS DRAINS
GO 4000 ELECTRIC JETTER	688 cc	10.0 GPM	3500 PSI	1/8" X 100' 3/8 X 300'	1 1/2" TO 8"	TUBS, SINKS SHOWERS DRAINS

THE MODEL COMPARISON CHART PICTURED ABOVE SHOULD ONLY BE USED AS A GUIDELINE. ITS SUGGESTED APPLICATIONS MAY VARY DEPENDING ON SITE OF LOCATION, AGE, TURNS, MATERIAL AND LENGTH OF DRAINAGE PIPE AND OPERATOR.

HOSE SELECTION

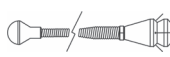
GORLITZ HOSES ARE AVAILABLE WITH DIFFERENT PRESSURE RATINGS, DIAMETERS, LENGTHS AND END FITTINGS. WHENEVER POSSIBLE, ALWAYS USE SHORTEST HOSE WITH LARGEST INSIDE DIAMETER TO MAINTAIN PRESSURE AND WATER VOLUME.

NOZZLE SELECTION

GORLITZ NOZZLES ARE AVAILABLE IN BRASS OR STEEL WITH NUMEROUS AMOUNT OF JETS. NOZZLES MADE FROM BRASS MATERIAL SHOULD NOT EXCEED 1500 PSI OF PRESSURE. STEEL NOZZLES ARE RATED AT 4000 PSI OF PRESSURE. THE AMOUNT OF REAR JETS, WATER VOLUME AND PRESSURE DETERMINES THE DRIVING FORCE OF THE HOSE.



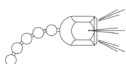
BALL NOZZLE



FLEX CORNER HEAD



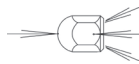
ROTATING HEAD



DROP HEAD



THRUST HEAD



LASER HEAD



CORNER HEAD



REPLACE ALL WORN NOZZLES. A WORN NOZZLE WILL RESULT IN LOSS OF PRESSURE.

HOSE & NOZZLE COMPARISON CHART

HOSE TYPE	HOSE I.D.	HOSE O.D.	NPT SIZE	NOZZLE TYPE	NUMBER OF JETS	PART MAT'L	PART NUMBER	PIPE SIZE	SUGGESTED APPLICATIONS
TRAP HOSE	1/8"	5/16"	1/4"	THRUST HEAD	3 REV.	BRASS	JN 01-B	1 1/2"-3"	GENERAL MAINTENANCE ICE, SLUDGE, HEAVY GREASE TRAPS, SHARP TURNS SHARP TURNS
				LASER HEAD	3 REV. 1 FOR	BRASS	JN 04-B		
				CORNER HEAD	2 REV. 1 SIDE	BRASS	JN 07-B		GENERAL MAINTENANCE ICE, SLUDGE, HEAVY GREASE TRAPS, SHARP TURNS SUPERIOR CLEANING POWER
				DROP HEAD	3 REV.	BRASS	JN 08-B		
				THRUST HEAD	3 REV.	S.S.	JN 01		
				LASER HEAD	3 REV. 1 FOR.	S.S.	JN 04		
				CORNER HEAD	2 REV. 1 SIDE	S.S.	JN 07		
				ROTATING HEAD	4 REV.	S.S.	JN 10		
SMALL JETTER HOSE	1/4"	1/2"	1/2"	THRUST HEAD	3 REV.	BRASS	JN 11-B	2"-4"	GENERAL MAINTENANCE ICE, SLUDGE, HEAVY GREASE TRAPS, SHARP TURNS SHARP TURNS
				LASER HEAD	3 REV. 1 FOR	BRASS	JN 14-B		
				CORNER HEAD	2 REV. 1 SIDE	BRASS	JN 17-B		GENERAL MAINTENANCE ICE, SLUDGE, HEAVY GREASE TRAPS, SHARP TURNS SUPERIOR CLEANING POWER
				DROP HEAD	3 REV.	BRASS	JN 18-B		
				THRUST HEAD	3 REV.	S.S.	JN 11		
				LASER HEAD	3 REV. 1 FOR.	S.S.	JN 14		
				CORNER HEAD	2 REV. 1 SIDE	S.S.	JN 17		
				ROTATING HEAD	4 REV.	S.S.	JN 20		
MEDIUM JETTER HOSE	3/8"	1 1/16"	3/8"	THRUST HEAD	3 REV.	S.S.	JN 21	4"-8"	GENERAL MAINTENANCE ICE, SLUDGE, HEAVY GREASE TRAPS, SHARP TURNS SUPERIOR CLEANING POWER
				LASER HEAD	3 REV. 1 SIDE	S.S.	JN 24		
				FLEX HEAD	4 REV.	S.S.	JN 29		
				ROTATING HEAD	4 REV.	S.S.	JN 30		

THE HOSE AND NOZZLE COMPARISON CHART PICTURED ABOVE SHOULD ONLY BE USED AS A GUIDELINE. IT'S SUGGESTED APPLICATIONS MAY VARY.



FOR A COMPLETE NOZZLE CHART PLEASE VIEW CATALOG OR PRICE LIST.

SPRAY GUN

SOME JETTERS ARE EQUIPPED WITH A STANDARD SPRAY GUN. THE SPRAY GUN OFFERS THE ADVANTAGE OF CLEANING AUTOMOBILES, TRUCKS, ENGINE BLOCKS, MACHINES ETC.



WE RECOMMEND TO LOWER THE PSI SETTING WHEN USING A SPRAY GUN. HIGH WATER PRESSURE MAY REMOVE PAINT OR DAMAGE THE ITEM TO BE CLEANED.



TO SERVICE YOUR SPRAY GUN, REFER TO THE SPRAY GUN MANUFACTURERS OPERATING INSTRUCTIONS.

PRESSURE RELIEF VALVE

GASOLINE POWERED JETTERS ARE EQUIPPED WITH A MANUAL PRESSURE RELIEF VALVE. TO RELEASE PRESSURE IN THE SYSTEM DUE TO A PLUGGED NOZZLE, ETC. ALWAYS SHUT MOTOR OFF FIRST BEFORE OPENING THE MANUAL PRESSURE RELIEF VALVE.

SAFETY VALVE

GASOLINE DRIVEN JETTERS ARE PROVIDED WITH A MANUALLY ADJUSTABLE POP-OFF SAFETY VALVE PRECALIBRATED AT THE FACTORY WITH FINAL ADJUSTMENTS TO BE PERFORMED BY THE OPERATOR. PRESSURE SETTINGS IS ACCOMPLISHED BY TURNING THE SET SCREW NEAR THE VALVE TIP "IN" FOR MORE PRESSURE AND "OUT" FOR LESS PRESSURE READING. SOME UNITS ARE ALSO EQUIPPED WITH A THERMAL RELIEF VALVE WHICH AUTOMATICALLY RELIEVES PRESSURE. WHEN THE TEMPERATURE RISES TO HIGH.

**PRESSURE SETTINGS: 3000 PSI MAXIMUM FOR 389 cc MODELS
3500 PSI MAXIMUM FOR 688 cc MODELS**

LIQUID INJECTOR

THE CHEMICAL INJECTION WITH A FIXED OR ADJUSTABLE FEED RATE SHOULD BE INSTALLED BETWEEN THE PRESSURE REGULATOR AND THE REEL. THIS ADDED FEATURE PERMITS THE OPERATOR TO ADD A CLEANING OR SOAP SOLUTION TO THE WATER FLOW. A HIGH/LO NOZZLE MUST BE USED IN ORDER TO ACTIVATE THE CHEMICAL INJECTOR.



FOR PERFORMANCE, SPECIFICATIONS, INSTALLATION AND HOW TO SERVICE THE CHEMICAL INJECTOR REFER TO THE OPERATING INSTRUCTIONS SUPPLIED BY THE PUMP MANUFACTURER.



NEVER USE POISONOUS OR CORROSIVE SOLUTIONS AS A CLEANING OR CUTTING AGENT.

PULSATOR

THE PULSATOR PRODUCES A SHORT INTERRUPTION OF WATER FLOW NOTICED AS A VIBRATION FELT THROUGHOUT THE JETTING HOSE (MORE OBVIOUS WITH SMALL DIAMETER HOSE). THIS PULSATION PERMITS A BETTER HOSE MOVEMENT THROUGH THE PIPE AND ALSO HELPS TO CUT THROUGH OBSTRUCTIONS WITH EASE. WHEN STARTING YOUR MOTOR UNDER NORMAL OPERATING CONDITIONS, THE PULSATOR VALVE SHOULD ALWAYS BE OFF.



THE PULSATION DIAL OR KNOB SHOULD ONLY BE TURNED IN UNTIL VIBRATION IS ACTIVATED. CONTINUED TURNING OF THE DIAL OR KNOB WILL DAMAGE THE PUMP.



ONCE IN THE PULSATION MODE, THE OPERATOR SHOULD ALWAYS AND CONTINUOUSLY MOVE THE JETTER HOSE TO AVOID EXCESSIVE WEAR AND TEAR OF THE HOSE.

PRESSURE REGULATOR

THE PRESSURE REGULATOR KNOB, LOCATED AT THE PUMP, ALLOWS THE OPERATOR TO ADJUST THE PRESSURE DURING OPERATION. THE ADJUSTMENT SHOULD BE PERFORMED ONLY AFTER THE MOTOR/ENGINE HAD BEEN STARTED. IT IS RECOMMENDED TO START ELECTRIC UNITS WITH AS LITTLE PRESSURE AS POSSIBLE TO AVOID TRIPPING A CIRCUIT BREAKER. THEN GRADUALLY INCREASE TO NORMAL WORKING PRESSURE. ON GASOLINE POWERED MODELS THE PRESSURE AND RPM OF THE ENGINE ARE DIRECTLY RELATED. LOW RPM EQUALS LOW PRESSURE, HIGH RPM EQUALS HIGH PRESSURE ON LARGER DIAMETER HOSE. ON SMALLER DIAMETER HOSE THE PRESSURE REGULATOR MUST BE MANUALLY ADJUSTED TO REACH LOWER PRESSURE SETTINGS DUE TO LESS WATER VOLUME PASSING THROUGH HOSE. IF DESIRED THE PRESSURE REGULATOR CAN BE ADJUSTED FROM ZERO TO DESIRED PRESSURE SETTINGS AFTER STARTING ENGINE AND ATTAINING PROPER ENGINE RPM IN RELATION TO EXPECTED PRESSURE SETTING. DUE TO THE HIGH SENSITIVITY OF THESE REGULATORS THEY ARE NOT COVERED IN THE WARRANTY.

**PRESSURE SETTINGS: 1250 PSI (1500 PSI MAXIMUM) FOR 2 HP ELECTRIC MODELS
2750 PSI (3000 PSI MAXIMUM) FOR 389 cc GASOLINE MODELS
3250 PSI (3500 PSI MAXIMUM) FOR 688 cc GASOLINE MODELS**

MACHINE SETUP CHECK LIST

GORLITZ JETTERS SHOULD BE GIVEN THE BEST OF CARE. IF KEPT CLEAN AND LUBRICATED, THEY CAN PROVIDE MANY YEARS OF TROUBLE-FREE SERVICE. THE FOLLOWING INSTRUCTIONS SHOULD BE CAREFULLY OBSERVED AT ALL TIMES:

- CHECK FUEL SUPPLY ON GASOLINE OPERATED JETTERS.
- TEST GFCI ON ELECTRIC DRIVEN JETTERS.
- CHECK OIL LEVEL AT PUMP.
- CHECK WATER INLET STRAINER.
- CHECK JETTING HOSE FOR KINKS OR EXCESSIVE WEAR.
- CHECK ALL HOSE AND REEL CONNECTORS.
- CHECK JETTING NOZZLE FOR ANY CLOGGED HOLES.
- CHECK FOR ADEQUATE WATER SUPPLY.

WATER FLOW RATE:

**3 GPM MINIMUM FOR 2 HP ELECTRIC MODELS
5 GPM MINIMUM FOR 389 cc GASOLINE MODELS
7 GPM MINIMUM FOR 688 cc GASOLINE MODELS**



REPAIR OR REPLACE ANY UNSAFE PART WHICH MAY CAUSE THE JETTER TO MALFUNCTION.

GENERAL OPERATING INSTRUCTIONS

1. ATTACH MINIMUM 5/8" DIA. GARDEN HOSE TO WATER FAUCET AND FLUSH HOSE.
2. CLOSE WATER FAUCET.
3. ATTACH GARDEN HOSE TO WATER INLET VALVE AT THE PUMP.
4. CONNECT JETTER HOSE TO REEL OR PUMP DISCHARGE CONNECTOR.



ONLY THE LARGER DIAMETER HOSE IS CONNECTED TO THE REEL. THE SMALL DIAMETER HOSE MUST BE COMPLETELY REMOVED FROM THE REEL BEFORE ANY CONNECTIONS CAN BE MADE.

5. ATTACH NOZZLE FINGER TIGHT PLUS TURN 1/2 TURN MAX. WITH WRENCH.



OVER TIGHTENING MAY BLOCK JETS AND INTERFERE WITH WATER SUPPLY.

6. APPROXIMATELY 6 FEET FROM NOZZLE MARK HOSE WITH ELECTRICAL TAPE, ETC.
7. OPEN WATER INTAKE AND DISCHARGE VALVES AT PUMP.
8. OPEN WATER FAUCET AGAIN TO PRIME PUMP, FLUSH JETTER HOSE AND NOZZLE.



AN EQUAL AMOUNT OF WATER MUST ESCAPE FROM EACH NOZZLE ORIFICE.

9. PUSH JETTER HOSE INTO THE DRAIN PIPE UNTIL HOSE MARKER DISAPPEARS, IF POSSIBLE.
10. START THE MOTOR/ENGINE.

• **MOTOR STARTING PROCEDURE FOR ELECTRIC DRIVEN MODELS:**

- A. PLUG CORD INTO A GROUNDED 110 VOLT RECEPTACLE.
- B. MOVE SWITCH TO "ON" POSITION.

• **ENGINE STARTING PROCEDURE FOR GASOLINE POWERED MODELS WITH RECOIL STARTER:**

- A. TURN THE FUEL VALVE TO THE 'ON' POSITION.
- B. MOVE THE CHOKE LEVER TO THE "CLOSE" POSITION.
- C. MOVE THE THROTTLE LEVER SLIGHTLY TO THE "LEFT".
- D. TURN THE ENGINE SWITCH TO THE "ON" POSITION.
- E. PULL STARTER GRIP LIGHTLY UNTIL RESISTANCE IS FELT, THEN PULL BRISKLY. RETURN GRIP GENTLY.
- F. GRADUALLY MOVE THE CHOKE LEVER TO THE "OPEN" POSITION.
- G. MOVE THE THROTTLE LEVER TO THE DESIRED ENGINE SPEED.

• **ENGINE STARTING PROCEDURE FOR GASOLINE POWERED MODELS WITH ELECTRIC STARTER:**

- A. TURN THE FUEL VALVE TO THE 'ON' POSITION.
- B. MOVE THE CHOKE LEVER TO THE "CLOSE" POSITION.
- C. MOVE THE THROTTLE LEVER SLIGHTLY TO THE "LEFT".
- D. TURN THE ENGINE SWITCH TO THE "START" POSITION AND HOLD IT THERE (5 SECONDS MAX.) UNTIL ENGINE STARTS. AFTER THE ENGINE STARTS, ALLOW THE ENGINE SWITCH TO RETURN TO THE "ON" POSITION.
- E. GRADUALLY MOVE THE CHOKE LEVER TO THE "OPEN" POSITION.
- F. MOVE THE THROTTLE LEVER TO THE DESIRED ENGINE SPEED.



FOR ADDITIONAL INFORMATION ON HOW TO START YOUR ENGINE REFER TO THE ENGINE OPERATING MANUAL SUPPLIED BY THE MANUFACTURER.

11. ADJUST PRESSURE WITH THE PRESSURE REGULATOR KNOB.
12. START JETTING.

TO NEGOTIATE TIGHT PIPE TURNS OR DIFFICULT WASTE LINE BLOCKAGES IT MAY BE NECESSARY TO ROTATE OR TWIST THE HOSE NEAR THE DRAIN OPENING. ONCE YOU HAVE CUT THROUGH THE BLOCKAGE, PULL HOSE BACK SEVERAL FEET. PASS HOSE AGAIN THROUGH SAME STOPPAGE LOCATION AND ADVANCE TO NEXT LARGER DRAIN LINE CONNECTION. SLOWLY RETRIEVE HOSE FROM DRAIN PIPE TO ALLOW A THOROUGH CLEANING JOB.

JETTER SHUT-DOWN INSTRUCTIONS

1. WATCH FOR THE HOSE MARK TO ARRIVE AT THE DRAIN PIPE ENTRANCE.
2. REDUCE PRESSURE GRADUALLY UNTIL PRESSURE GAUGE READS ZERO.
3. STOP THE MOTOR/ENGINE.
 - **MOTOR STOPPING PROCEDURE FOR ELECTRIC MODELS:**
 - A. MOVE SWITCH TO "OFF" POSITION.
 - B. DISCONNECT CORD FROM ELECTRICAL SOURCE.
 - **MOTOR STOPPING PROCEDURE FOR PROPANE POWERED MODELS:**
 - A. MOVE THE THROTTLE LEVER FULLY TO THE "RIGHT".
 - B. TURN THE ENGINE SWITCH TO THE "OFF" POSITION.
 - C. CLOSE THE PROPANE TANK VALVE.
 - **MOTOR STOPPING PROCEDURE FOR GASOLINE POWERED MODELS:**
 - A. MOVE THE THROTTLE LEVER FULLY TO THE "RIGHT".
 - B. TURN THE ENGINE SWITCH TO THE "OFF" POSITION.
 - C. TURN THE FUEL VALVE TO THE "OFF" POSITION.



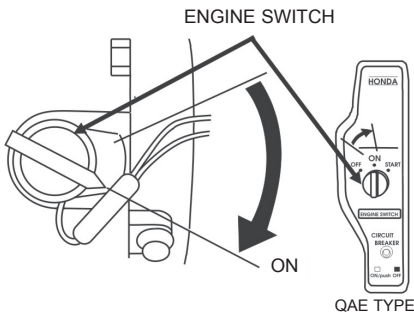
A LEFT OPEN FUEL VALVE CAN FLOOD AND GUM-UP THE CARBURETOR. THE RESULT IS A HARD STARTING AND/OR ROUGH IDLING ENGINE.

4. CONTINUE TO RUN WATER THROUGH PUMP AND JETTER HOSE FOR ANOTHER MINUTE.
5. CLOSE WATER SUPPLY AND REMOVE GARDEN HOSE FROM FAUCET.
6. CLOSE WATER INLET VALVE AND DISCONNECT GARDEN HOSE FROM JETTER.
7. REMOVE REMAINING JETTER HOSE FROM DRAIN PIPE.
8. STORE JETTER HOSE PROPERLY.
9. REMOVE JETTER NOZZLE AS REQUIRED.
10. OPEN INTAKE, DISCHARGE OR PRESSURE RELIEF VALVE TO DRAIN PUMP.

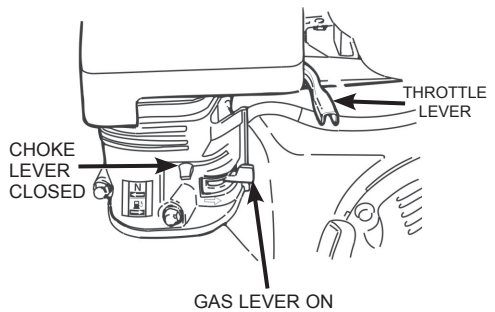


NEVER PERMIT PUMP TO RUN DRY AND NEVER SPRAY ACIDS OR ABRASIVE FLUIDS!

PARTIAL ENGINE VIEW (GASOLINE MODELS)

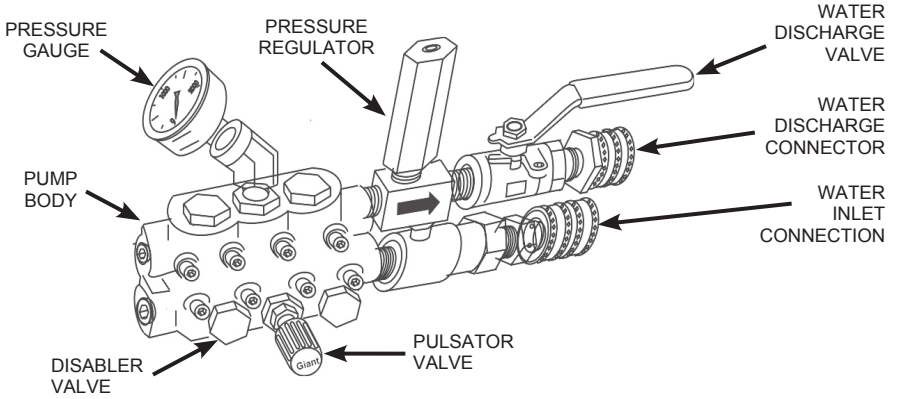


ENGINE SWITCH (OPTIONAL)

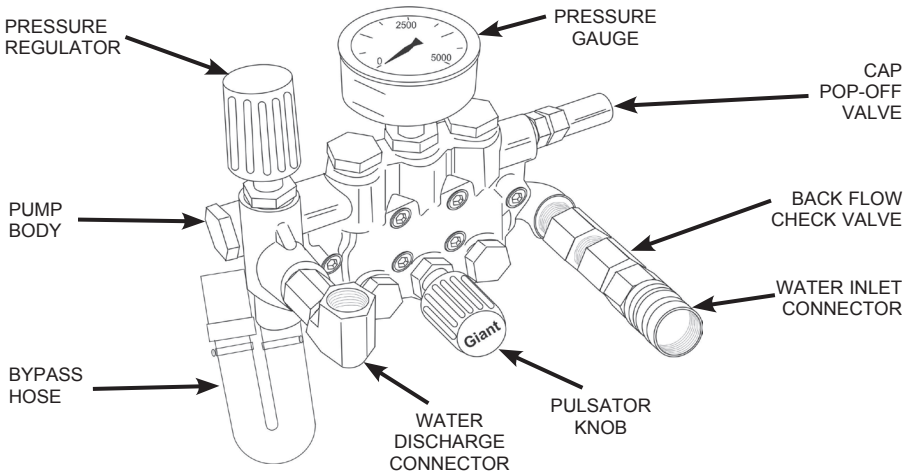


CARBURETOR

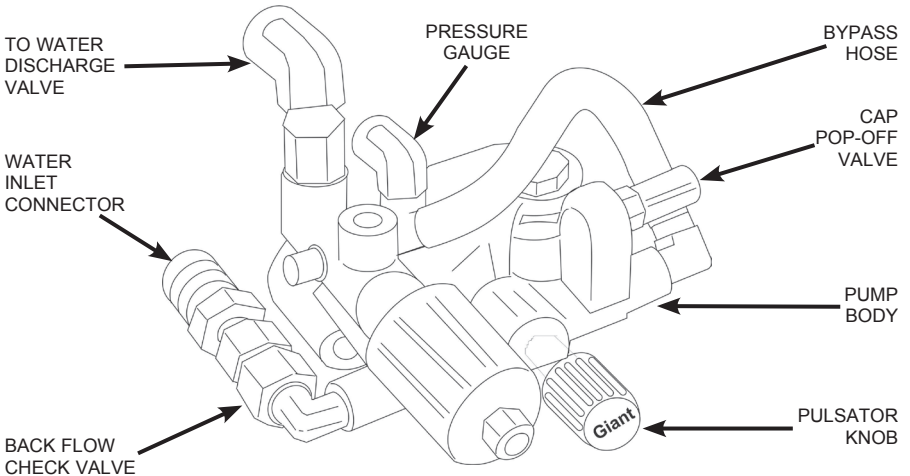
WATER PUMP ASSEMBLY (1500 SERIES)



WATER PUMP ASSEMBLY (3000 SERIES)



WATER PUMP ASSEMBLY (3500 SERIES)



GREASE AND ICE BLOCKAGES

HEAVY GREASE LINES OR ICE BLOCKAGES ARE CLEANED BEST BY USING HOT WATER FROM A WATER HEATER OR HOT WATER FAUCET AND SUPPLIED DIRECTLY TO THE WATER INLET AT THE JETTER.

HOT WATER TEMPERATURE: *180° F MAXIMUM FOR 2 HP ELECTRIC MODELS
160° F MAXIMUM FOR 389 cc AND 688 cc GASOLINE MODELS*

WINTER PROTECTION

PROTECT YOUR PUMP AND HOSE FROM FREEZING TEMPERATURES BY DRAINING ALL WATER FROM THE HOSE AND PUMP. DISCONNECT SUPPLY HOSE AT THE REEL, OPEN THE SUPPLY HOSE BALL VALVE AND THEN FLUSH THE PUMP WITH ANTIFREEZE.

GENERAL MAINTENANCE TIPS

TO KEEP YOUR HIGH PRESSURE WATER JETTER IN GOOD AND SAFE OPERATING CONDITION, PERIODICALLY CHECK THE FOLLOWING ITEMS:

- LUBRICATE ALL POINTS OF FRICTION.
- CHECK TIRE PROFILE AND PRESSURE.
- INSPECT ALL FITTINGS AND VALVES.
- PAY SPECIAL ATTENTION FOR WEAR ON HOSES.
- INSPECT ALL ELECTRICAL CONNECTIONS AND SWITCHES.
- REPAIR OR REPLACE ANY WORN OR DAMAGED ITEMS.
- TEST GFCI FREQUENTLY.



FOR ADDITIONAL SERVICE AND MAINTENANCE TO MOTORS, PUMPS, REELS, SPRAY GUNS, AND CHEMICAL INJECTORS CONSULT MANUFACTURERS OPERATING AND SERVICE MANUALS.

TROUBLE SHOOTING YOUR WATER JETTER

SYMPTOMS	POSSIBLE CAUSE(S)	CORRECTIVE ACTION(S)
NO WATER FLOW	NO WATER SUPPLY KINKED, BLOCKED OR COLLAPSED HOSE BACKFLOW CHECK VALVE STUCK IN CLOSED POSITION INTAKE AND/OR PUMP TO REEL VALVES CLOSED CLOGGED NOZZLE	OPEN WATER SUPPLY REMOVE KINKS, BLOCKAGES OR REPLACE HOSE TAP VALVE GENTLY WITH A HARD OBJECT TO FREE VALVE ASSEMBLY, DISASSEMBLE AND CLEAN OR REPLACE VALVE OPEN VALVES CLEAN NOZZLE
LOW WATER FLOW	INADEQUATE WATER FLOW WATER INLET HOSE TOO SMALL PARTIALLY CLOGGED OR DAMAGED NOZZLE	CHECK STRAINER AND /OR WATER SUPPLY LINE FOR BLOCKAGE RECOMMENDED HOSE SIZE IS 3/4" CLEAN NOZZLE OR REPLACE
LOW WATER PRESSURE	PRESSURE REGULATOR WIDE OPEN PULLING AIR AT INLET LINE DEFECTIVE SPRING PLUNGER OR SEAL ASSEMBLY OVERSIZED OR WORN NOZZLE	ADJUST REGULATOR HANDLE CLOCKWISE TO INCREASE PRESSURE RATING LOCATE AIR INTAKE, RESEAL OR REPLACE DEFECTIVE PART CLEAN VALVE ASSEMBLY. REFER TO MANUFACTURERS REPAIR AND PARTS ASSEMBLY MANUAL CHECK FOR PROPER SIZE

TROUBLE SHOOTING YOUR WATER JETTER

SYMPTOMS	POSSIBLE CAUSE(S)	CORRECTIVE ACTION(S)
ERRATIC WATER FLOW OR PRESSURE	<p>PUMP NOT PROPERLY PRIMED</p> <p>RESTRICTED OR PARTIALLY CLOGGED INLET HOSE</p> <p>SUCKING AIR AT INLET LINE</p>	<p>DISCONNECT HOSE AT OUTLET AND OPEN VALVES. RUN MOTOR UNTIL PRIMED</p> <p>REMOVE FOREIGN OBJECT</p> <p>LOCATE AIR INTAKE LEAK AND SEAL</p>
ELECTRIC MOTOR OVERHEATS AND/OR CIRCUIT BREAKER KEEPS TRIPPING AT PANEL	<p>PRESSURE REGULATOR ADJUSTED TO MAXIMUM RATING</p> <p>EXCEEDING MAXIMUM PRESSURE RATING</p> <p>NOT SUFFICIENT POWER SUPPLY</p> <p>CLOGGED AND/OR UNDERSIZED NOZZLES</p>	<p>BACK-OFF PRESSURE REGULATOR, START WITH ZERO PRESSURE RATING ON PRESSURE GAGE.</p> <p>REDUCE PRESSURE</p> <p>EXTENSION CORD TO LONG AND/OR WIRE SIZE TO SMALL. RECOMMENDED IS 12 GAGE WIRE 3 PRONG TYPE HEAVY DUTY EXTENSION CORD, MAX. 50' LONG. 20 AMP MIN. BREAKER SIZE</p> <p>CLEAN OR REPLACE CLOGGED OR UNDERSIZED NOZZLES</p>
ELECTRIC MOTOR WILL NOT START	<p>NO ELECTRIC POWER</p> <p>EXTENSION CORD GFCI TRIPPED MOTOR OVERLOAD BUTTON TRIPPED</p> <p>ON/OFF SWITCH DEFECTIVE LOOSE OR FAULTY ELECTRICAL CONNECTIONS</p>	<p>CHECK FOR POWER AT PANEL.</p> <p>CIRCUIT BREAKER MUST BE IN POSITION</p> <p>RESET GFCI BUTTON</p> <p>RESET MANUAL OVERLOAD BUTTON</p> <p>REPLACE SWITCH</p> <p>TIGHTEN AND/OR REPAIR CONNECTIONS</p>
GASOLINE MOTOR WILL NOT START	<p>NO FUEL</p> <p>FOULED SPARK PLUG</p> <p>MECHANICAL AND/OR ELECTRICAL PROBLEM</p>	<p>ADD UNLEADED GASOLINE</p> <p>REPLACE SPARK PLUG</p> <p>REFER TO OWNER'S ENGINE OPERATING MANUAL</p>
WATER LEAKAGE FROM UNDER THE MANIFOLD	<p>WORN SEALS</p>	<p>REPAIR WITH SEAL KIT</p>
OIL LEAK BETWEEN CRANKCASE AND PUMP	<p>WORN CRANKCASE OIL SEALS</p>	<p>REPLACE OIL SEALS</p>
OIL LEAK IN THE AREA OF CRANKSHAFT	<p>WORN CRANKSHAFT SEAL</p> <p>DAMAGED BEARING</p>	<p>REPLACE CRANKSHAFT SEAL</p> <p>REPLACE BEARING</p>
WATER IN CRANKCASE	<p>HUMID AIR CONDENSING INSIDE THE CRANKCASE</p> <p>WORN CRANKCASE OIL SEALS</p> <p>WORN PLUNGER RETAINER O-RING</p>	<p>CHANGE OIL EVERY THREE (3) MONTH OR 500 HOUR INTERVALS</p> <p>REPLACE OIL SEALS</p> <p>REPLACE O-RING</p>
OIL LEAKING FROM UNDERSIDE OF THE CRANKCASE	<p>WORN CRANKCASE OIL SEALS</p>	<p>REPLACE CRANKCASE OIL SEALS</p>
OIL LEAKING AT THE REAR PORTION OF THE CRANKCASE	<p>DAMAGED OR IMPROPERLY INSTALLED OIL GAUGE, CRANKCASE COVER O-RING OR DRAIN PLUG O-RING</p>	<p>REPLACE OIL GAUGE O-RING, CRANKCASE COVER O-RING OR DRAIN PLUG O-RING</p>
FREQUENT OR PREMATURE FAILURE OF THE PACKING	<p>SCORED OR CRACKED PLUNGERS</p> <p>EXCESSIVE WATER TEMPERATURE</p> <p>EXCESSIVE DISCHARGE PRESSURE</p> <p>RUNNING PUMP DRY</p>	<p>REPLACE PLUNGER</p> <p>LOWER WATER TEMPERATURE</p> <p>REDUCE PRESSURE TO SPECIFICATION</p> <p>DO NOT RUN PUMP WITHOUT WATER</p>

MACHINE PARTS LIST

GO 1500A

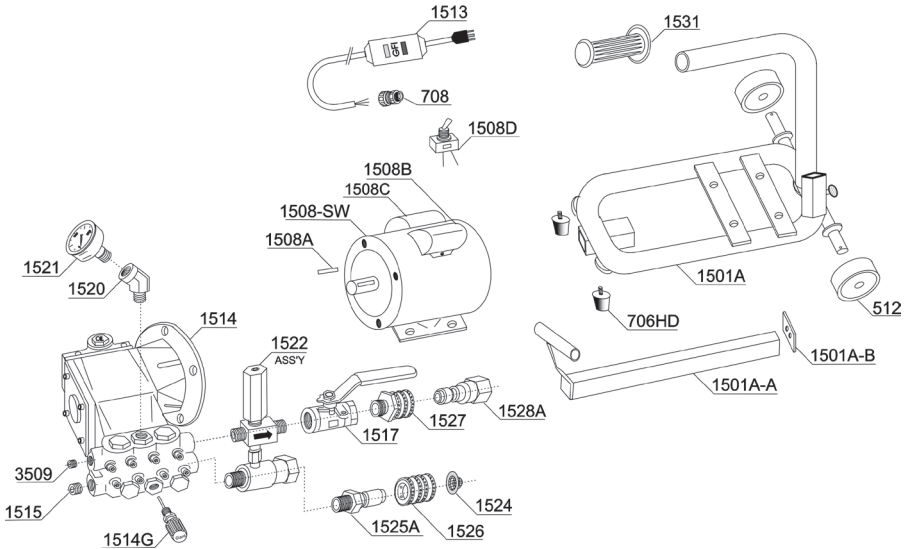
GO 1500

GO 3000

GO 3500

GO 4000

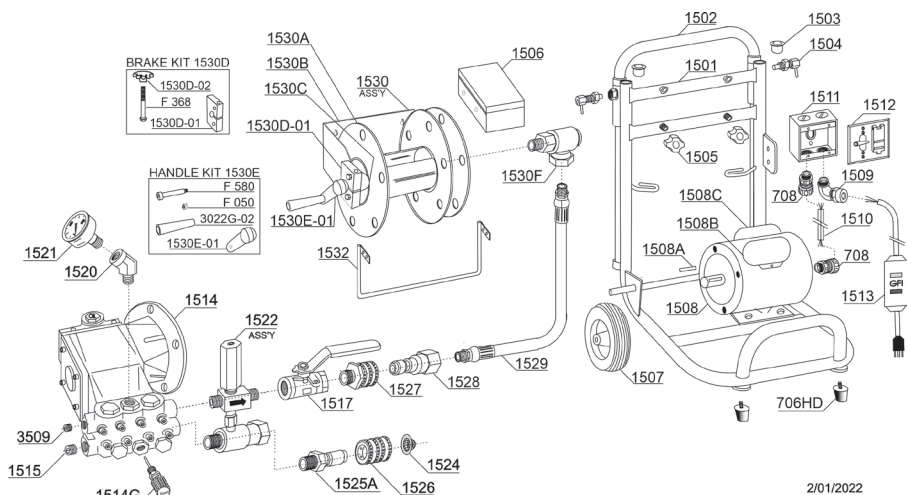
GO 1500A



PART #	DESCRIPTION	REQ
1501A	FRAME	1
1501A-A	PULLSTICK	1
1501A-B	STOP	1
1508-SW	MOTOR *	1
1508A	MOTOR SHAFT KEY	1
1508B	MOTOR START CAPACITOR *	1
1508C	MOTOR RUN CAPACITOR *	1
1508D	TOGGLE SWITCH *	1
1509	COMPRESSION FITTING *	1
1513	ELECTRIC CORD W. GFI *	1
1514	PUMP *	1
1514G	PULSATOR VALVE *	1
1515	HEX PLUG 1/2" *	1
1517	BRASS BALL VALVE 3/8" *	2
1520	45° HP STREET ELBOW *	1
1521	SS PRESSURE GAUGE *	1

PART #	DESCRIPTION	REQ
1522	PRES/REG UNLOADER ASSEMBLY *	1
1524	MESH SCREEN *	1
1525A	MALE HOSE NIPPLE 1/2"	1
1526	HOSE COUPLER *	1
1527	MALE COUPLER 3/8" *	1
1528A	FEMALE NIPPLE 1/8"	1
1531	HAND GRIP *	1
512	WHEEL *	2
706HD	RUBBER FEET *	2
708	COMPRESSION FITTING *	1
3509	HEX PLU 3/8"	1
F600	COTTER PIN*	2
G 9525	PLUNGER PACKING KIT *	1
G 9116	VALVE ASSEMBLY KIT *	1
G 9144	OIL SEAL KIT *	1

GO 1500

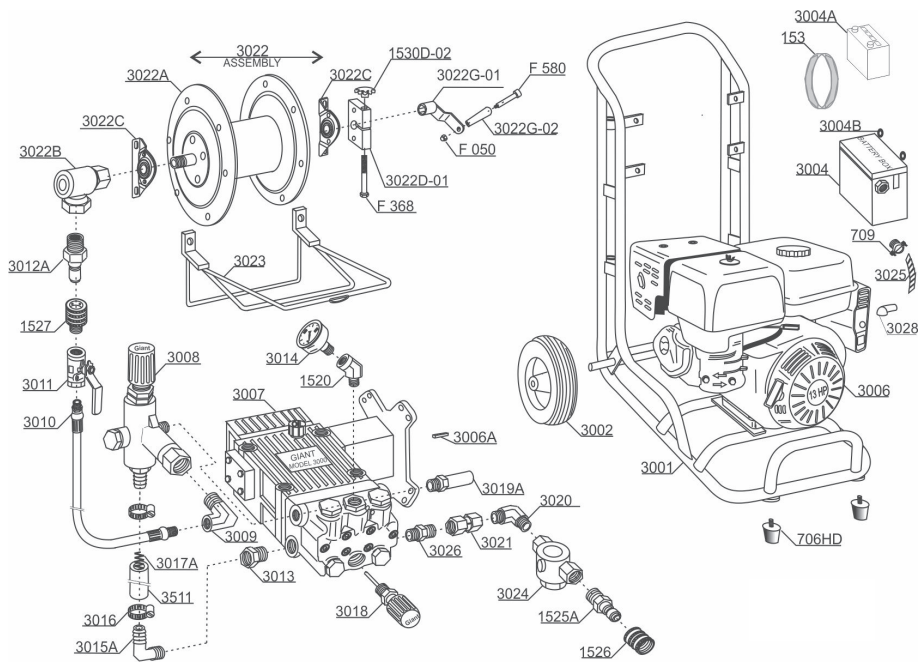


2/01/2022

PART #	DESCRIPTION	REQ
1501	FRAME	1
1502	HANDLE COMPLETE	1
1503	PLASTIC CAP *	2
1504	HANDLE LOCK *	2
1505	KNURL KNOB *	2
1506	TOOL BOX*	1
1507	WHEEL *	2
1508	MOTOR *	1
1508A	MOTOR SHAFT KEY	1
1508B	MOTOR START CAPACITOR *	1
1508C	MOTOR RUN CAPACITOR *	1
1509	COMPRESSION FITTING *	1
1510	ELECTRIC CORD, 3 WIRE * - Ref # F 755	1
1511	JUNCTION BOX *	1
1512	COVER PLATE COMPLETE *	1
1513	ELECTRIC CORD WITH GFI *	1
1514	PUMP *	1
1514G	PULSATOR VALVE *	1
1515	HEX PLUG 1/2" *	1
1517	BRASS BALL VALVE 3/8" *	2
1520	45° HP STREET ELBOW *	1
1521	SS PRESSURE GAUGE *	1
1522	PRES/REG UNLOADER ASSEMBLY *	1
1524	MESH SCREEN *	1
1525A	MALE HOSE NIPPLE 1/2"	1

PART #	DESCRIPTION	REQ
1526	HOSE COUPLER *	1
1527	MALE COUPLER 3/8" *	1
1528	FEMALE NIPPLE 3/8" *	1
1529	SUPPLY HOSE *	1
1530	REEL ASSEMBLY	1
1530A	REEL	1
1530B	BRACKET	1
1530C	BEARING *	2
1530D-01	BRAKE PAD	1
1530D-02	KNOB *	1
1530E-01	CRANK	1
1530F	SWIVEL ARM *	1
1532	HOSE GUARD	1
706HD	RUBBER FEET *	2
708	COMPRESSION FITTING *	2
3022G-02	HANDLE *	1
3509	HEX PLUG 3/8" *	1
F 050	ACORN NUT *	1
F 368	HEX BOLT *	1
F 580	SHOULDER BOLT *	1
F 600	COTTER PIN*	2
G 9525	PLUNGER PACKING KIT *	1
G 9116	VALVE ASSEMBLY KIT *	1
G 9144	OIL SEAL KIT *	1

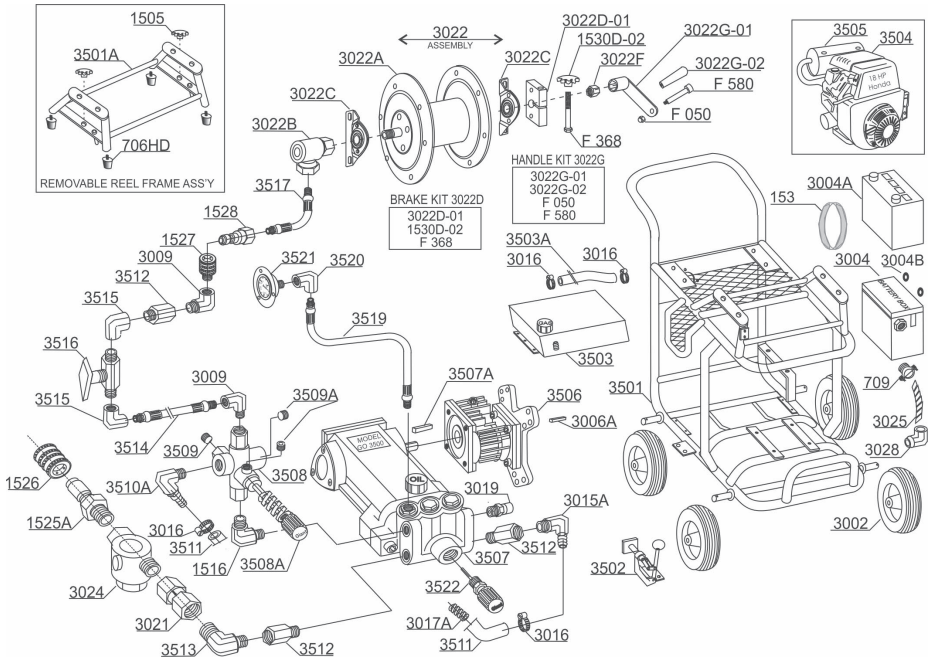
GO 3000



PART #	DESCRIPTION	REQ
3001	FRAME	1
3002	WHEEL *	2
3004	BATTERY BOX *	1
3004A	BATTERY *	1
3004B	BATTERY BOX GROMMET *	2
3006	MOTOR 13HP *	1
3006A	MOTOR SHAFT KEY 3/8" *	1
3007	PUMP *	1
3008	PRES/REG UNLOADER ASS'Y *	1
3009	HP STREET ELBOW 3/8" *	1
3010	SUPPLY HOSE *	1
3011	SS BALL VALVE 3/8" *	1
3012A	MALE NIPPLE 1/2" *	1
3013	REDUCER 1/2" X 3/8" *	1
3015A	90° HOSE BARB	1
3016	HOSE CLAMP	2
3018	PULSATOR VALVE ASSEMBLY *	1
3019A	THERMAL RELIEF VALVE *	1
3020A	STREET ELBOW 1/2" *	1
3021	BACK FLOW CHECK VALVE *	1
3022	REEL ASSEMBLY	1
3022A	REEL	1
3022B	SWIVEL ARM *	1
3022C	BEARING *	2
3022D-01	BRAKE PAD	1

PART #	DESCRIPTION	REQ
3022G-01	CRANK	1
3022G-02	HANDLE *	1
3023	HOSE GUARD	1
3024	FILTER *	1
3025	SPIRAL WRAP *	1
3026	MALE NIPPLE 1/2" *	1
3028	PROTECTIVE RUBBER BOOT *	1
3521	SS PRESSURE GAUGE *	1
706HD	RUBBER FEET *	2
153	DRUM RUBBER SLEEVE *	1
709	CORD CONNECTOR *	1
1520	45° HP STREET ELBOW *	1
1525A	MALE HOSE NIPPLE 1/2" *	1
1526	HOSE COUPLER *	1
1527	MALE COUPLER 3/8" *	1
1528A	FEMALE NIPPLE 1/8" *	1
1530D-02	KNOB *	1
F 050	ACORN NUT *	1
F 320	1/4"-20 X 4" HEX BOLT *	1
F 368	3/8"-16 X 4.5" HEX BOLT *	1
F 600	COTTER PIN *	2
G 9116	PUMP VALVE ASSEMBLY KIT *	1
G 9119	PUMP PLUNGER PACKING KIT *	1
G 9144	PUMP OIL SEAL KIT *	1

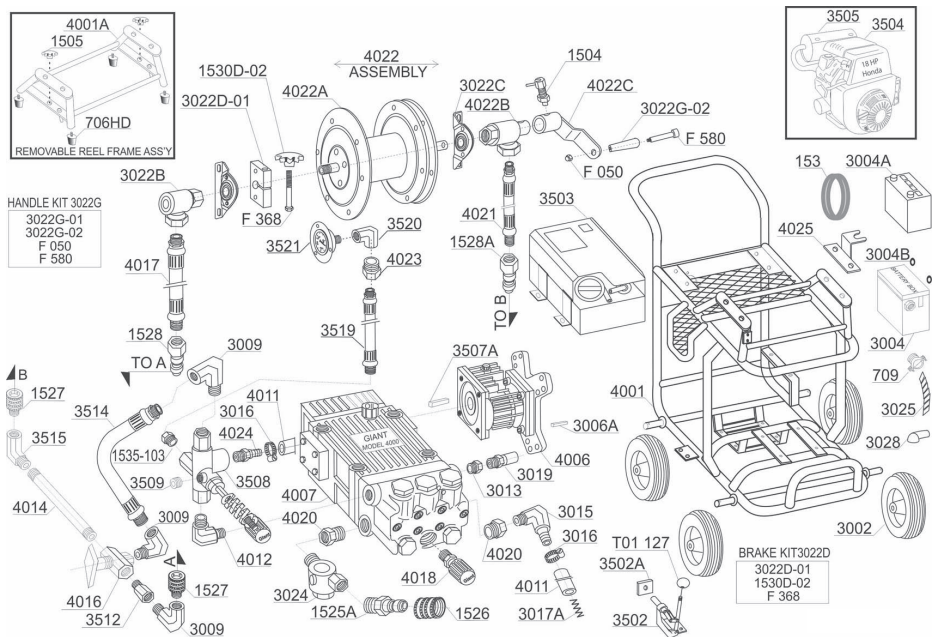
GO 3500



PART #	DESCRIPTION	REQ
3501	FRAME	1
3502	BRAKE ASSEMBLY	1
3503	FUEL TANK *	1
3503A	FUEL HOSE *	1
3504	MOTOR 18HP *	1
3505	MUFFLER *	1
3506	GEAR BOX *	1
3507	PUMP *	1
3507A	PUMP SHAFT KEY 1/2" *	1
3508	PRES/REG UNLOADER *	1
3509	HEX PLUG 3/8" *	1
3509A	HEX PLUG 1/4" *	2
3510A	HOSE BARB *	1
3511	BY PASS HOSE 1/2" *	1
3512	HP EXPANDER 3/8" *	2
3513	MALE ELBOW 1/2" X 3/8" *	1
3514	SUPPLY HOSE (TO VALVE) *	1
3515	HP FEMALE ELBOW 3/8" *	2
3516	INSTRUMENTATION VALVE *	1
3517	SUPPLY HOSE (TO REEL) * - Ref # 4017	1
3519	PRESSURE HOSE (TO GAUGE) *	1
3520	HP FEMALE ELBOW 1/4" *	1
3521	SS PRESSURE GAUGE *	1
3522	PULSATOR VALVE ASSEMBLY *	1
3530	PANEL LABEL	1
153	DRUM RUBBER SLEEVE *	1
706HD	RUBBER FEET *	4
709	CORD CONNECTOR *	1
1505	KNURL KNOB	2
1516	HP MALE ELBOW 3/8" *	1
1525A	MALE HOSE NIPPLE 1/2" *	1
1526	HOSE COUPLER *	1

PART #	DESCRIPTION	REQ
1527	MALE COUPLER 3/8" *	1
1528A	FEMALE NIPPLE 1/8" *	1
1530D-02	KNOB *	1
3002	WHEEL *	4
3004	BATTERY BOX *	1
3004A	BATTERY *	1
3004B	BATTERY BOX GROMMET *	2
3006A	SHAFT KEY, MOTOR	1
3009	HP STREET ELBOW 3/8" *	1
3015	90° HOSE BARB *	1
3016	HOSE CLAMP *	4
3017A	SPRING *	1
3019	CAP POP-OFF VALVE *	1
3021	BACK FLOW CHECK VALVE *	1
3022	REEL ASSEMBLY	1
3022A	REEL	1
3022B	SWIVEL ARM *	1
3022C	BEARING *	2
3022D-01	BRAKE PAD	1
3022F	END CAP	1
3022G-01	CRANK	1
3022G-02	HANDLE *	1
3024	FILTER *	1
3025	SPIRAL WRAP *	1
3028	PROTECTIVE RUBBER BOOT *	1
F 050	ACORN NUT *	1
F 368	HEX BOLT *	1
F 580	SHOULDER BOLT *	1
F 600	COTTER PIN *	4
G 9238	PUMP PLUNGER PACKING KIT *	1
G 9202	OIL SEAL KIT, P-58 *	1
G 09168	PUMP VALVE ASSEMBLY KIT *	1

GO 4000



PART #	DESCRIPTION	REQ
4001	FRAME	1
4006	GEAR BOX *	1
4007	PUMP *	1
4011	BY PASS HOSE 1/2" *	1
4012	HP 1/2" X 3/8" MALE ELBOW *	1
4014	EXTENDED NIPPLE *	1
4016	3-WAY BALL VALVE *	1
4017	SUPPLY HOSE *	1
4018	PULSATOR VALVE ASSEMBLY *	1
4020	PIPE REDUCER *	2
4022	REEL ASSEMBLY	1
4022A	SPLIT REEL	1
4022B	SWIVEL ARM	1
4022C	CRANK	1
4023	REDUCER 1/4" X 1/8" *	1
4025	REEL HOSE GUARD	1
1504	HANDLE LOCK *	1
1505	KNURL KNOB	2
1525A	MALE HOSE NIPPLE 1/2"	1
1526	HOSE COUPLER *	1
1527	MALE COUPLER 3/8" *	1
1528	FEMALE NIPPLE 3/8" *	1
1528A	FEMALE NIPPLE 1/8" *	1
1530D-02	KNOB *	1
1535-103	REDUCER, 3/8"NPT TO 1/8" NPT	1
3004	BATTERY BOX *	1
3004A	BATTERY *	1
3004B	BATTERY BOX GROMMET *	3
3006A	SHAFT KEY, MOTOR	1
3009	HP STREET ELBOW 3/8" *	3
3013	REDUCER 1/2" X 3/8" *	1
3015A	90° HOSE BARB *	1
3016	HOSE CLAMP *	2

PART #	DESCRIPTION	REQ
3017A	SPRING *	1
3019	CAP POP-OFF VALVE *	1
3022B	SWIVEL ARM *	1
3022C	BEARING *	2
3022D-01	BRAKE PAD	1
3022G-02	HANDLE *	1
3024	FILTER *	1
3025	SPIRAL WRAP *	1
3028	PROTECTIVE RUBBER BOOT *	1
3502	BRAKE ASSEMBLY	1
3503	FUEL TANK *	1
3504	MOTOR 18HP *	1
3505	MUFFLER *	1
3507A	PUMP SHAFT KEY 1/2" *	1
3508	PRES/REG UNLOADER *	1
3509	HEX PLUG 3/8" *	1
3512	HP EXPANDER 3/8" *	1
3514	SUPPLY HOSE (TO VALVE) *	1
3515	HP FEMALE ELBOW 3/8" *	1
3519	PRESSURE HOSE (TO GAUGE) *	1
3520	HP FEMALE ELBOW 1/4" *	1
3521	SS PRESSURE GAUGE *	1
3530	PANEL LABEL	1
153	DRUM RUBBER SLEEVE *	1
706HD	RUBBER FEET *	4
709	CORD CONNECTOR *	1
F 050	ACORN NUT *	1
F 368	HEX BOLT *	1
F 580	SHOULDER BOLT *	1
G 9141	PUMP PLUNGER PACKING KIT *	1
G 9641	PUMP OIL SEAL KIT *	1
G 9644	PUMP VALVE ASSEMBLY KIT *	1
F 600	COTTER PIN*	2

HOW TO ORDER

In order to avoid mistakes or delays of your shipment, please refer to our part number and description.

PRICES

Since prices are subject to change we cannot guarantee them for more than 30 days. The prices listed are valid for the period indicated on the cover of the price list only. Prices are Net F.O.B. Factory, Santa Fe Springs, California.

SALES TAX

Gorlitz Sewer & Drain, Inc. is required to charge applicable State Sales Tax on every item sold unless a California State Sales Tax Exemption Certificate has been provided.

FREIGHT POLICY

All merchandise shipped per parcel service are prepaid and added to the invoice. All shipping fees per trucking lines are the responsibility of the customer. Gorlitz Sewer & Drain, Inc. is not responsible for loss or damage during shipping. All freight claims must be initiated by customer directly with the freight carrier.

MERCHANDISE CLAIMS AND RETURN POLICY

All discrepancies in goods received must be claimed within five days after receipt of goods. Any item to be returned must be referenced by invoice number, date of sale and written consent of seller.

GORLITZ LIMITED WARRANTY

All products manufactured at Gorlitz Sewer & Drain, Inc. are warranted to be free from defects in material and workmanship under normal use and maintenance for a period of one (1) year from date of purchase to original buyer. If any parts break or fail, we ask you to notify your nearest dealer or Gorlitz Sewer & Drain, Inc. and supply us with proof of purchase and nature of failure. Gorlitz will repair or replace (at our option) any parts found to be defective. The replacement part assumes the unused portion of the warranty. Transportation of the product to any service station is the responsibility of the user unless stated otherwise in this warranty. The equipment is being sold to Buyer on an "as is" and "where is" basis and that except as specifically set forth in this agreement, Gorlitz makes no other representations or warranties, whether express or implied.

This warranty does not apply to expendable items such as cables, knives, nozzles, hoses, pressure gauges, regulators, jaws, fittings, etc., or to shaved, kinked, or broken hoses or cables, which show evidence of misuse. This warranty is void, and Gorlitz will not be liable for any damages arising from negligence, the unauthorized repair or alteration to equipment, the misuse or abuse of the equipment, the use of chemicals or accidents.

This warranty is exclusive and in lieu of all other expressed warranties and Gorlitz Sewer & Drain, Inc. does not authorize any party to assume for it any other obligation or liability. In no event shall Gorlitz Sewer & Drain, Inc. be liable for special or consequential damages arising from the use of this product or for any delay in the performance of this warranty due to causes beyond our control.

BUYER'S REPRESENTATION

In placing this order Buyer expressly understands, acknowledges and agrees that: (1) Buyer has received and read, or, prior to using the equipment, will read the Operating and Maintenance Instructions that accompanied this equipment order, including Gorlitz's Limited Warranty and all of the other Terms and Conditions of doing business with Gorlitz Sewer & Drain, Inc. ("Gorlitz") as stated therein; (2) Buyer will operate and maintain the equipment in accordance with the specifications stated in the Instructions; (3) Buyer indemnifies and holds Gorlitz harmless for Buyer's failure to use the equipment in accordance with the specifications stated in the Instructions; and (4) all disputes arising under this agreement shall be submitted to courts of competent jurisdiction in the State of California and the prevailing party in any action or proceeding to enforce any provision of this agreement will be awarded reasonable attorney fees and costs incurred in that action or proceeding or in efforts to negotiate the matter.

MANUFACTURERS WARRANTIES AND LITERATURE

Most products used on our equipment are warranted to the final consumer by their manufacturers. Copies of such warranties are supplied with our products or are available from the manufacturers. As a service, Gorlitz Sewer & Drain, Inc. will obtain copies of consumer warranties from the warrantor and will furnish them free of charge to consumers upon request. Gorlitz Sewer & Drain, Inc. assumes no responsibility for the content of such warranties or sales literature by performing this service.

Due to a continuing program of product improvement, Gorlitz Sewer & Drain, Inc. reserves the right without obligation to revise prices, specifications and equipment.



GORLITZ SEWER
& DRAIN **INC.**

10132 NORWALK BLVD
SANTA FE SPRINGS, CA. 90670

E-MAIL: SALES@GORLITZ.COM
INTERNET: HTTP://WWW.GORLITZ.COM